

MICHAEL • MANZELLA • FOUNDATION
EDUCATION • CHILDREN • CANCER RESEARCH • ARTS

SAVE THE DATE

SUNDAY, NOVEMBER 15 GOVERNORS COMEDY CLUB NIGHT

Please join us at Governor's Comedy Club in Levittown this year! Come celebrate Michael's energy and spirit laughing with family and friends while supporting the MMF's mission. Back by popular demand, we will also have beautiful gift baskets and gift certificates from local businesses. Help us make this the best comedy night yet!!



For more information and/or reservations, call Joan Manzella at (516) 764-7419.

SATURDAY, NOVEMBER 21 YALE HARVARD POST-GAME REUNION

Immediately following Yale's victory, friends and supporters of MMF are invited to enjoy pizza and beverages at Timothy Dwight College at Yale. The Society of Orpheus and Bacchus will once again regale the crowd with music and merriment!



Inside This Issue

Fundraising Events	1
Foundation Grants	2
Summer Fellowships	3
Mission Statement.....	4
Where Are They Now?	4

FROM THE CHAIRMAN

Dear Friends:

As MMF enters its *22nd year of activity*, we are proud to report another series of *resounding successes* focused on our mission in *education, children, cancer research and the arts*. We are delighted to describe our achievements in the following pages and encourage you to *draw inspiration* – as we have – from the unique stories behind each.

We also remain quite proud of our two-pronged approach to philanthropy - employing *direct sponsorship* and *selective partnerships* – that continually makes our world “just a little bit better” tomorrow than it was yesterday.

Our *direct sponsorships* allow us to support passionate young people – scientists, musicians, artists, activists – seeking to use their gifts to make a positive and enduring difference in the world. This year, we sponsored 6 new scientific and artistic fellows and also caught up with the exciting story of our friend and aspiring public interest lawyer, Rachel Wilf (profiled in “Where are they now?”).

We also work diligently to forge *selective partnerships* with organizations that bring sunshine and light into the lives of worthy individuals. Our impact is sometimes artistic – as illustrated in our newest partner “Backcountry Jazz” bringing music to the inner city. At other times, we reduce the terrible burden of cancer or life-threatening illness for afflicted children and their families – as illustrated in our multi-year partnership with “Friends of Karen.”

So, with another series of successes behind us, we remain *infinitely grateful* for your past support and *exceptionally confident* about our ability to continue making the world “just a little bit better” every day.

Frank J. Manzella

Michael Manzella Award



Frank Manzella, Sr. and Casey Manzella present the award to the 2015 recipient, Sonya Levitova.

MMF provides Summer Day Camp for Kids with Cancer

With a grant of \$3,500, MMF provided a memorable summer for a child with cancer at **Sunrise Day Camp**. Sunrise Day Camps bring the simple pleasures of childhood back to children struggling with cancer, changing months of loneliness and isolation into summers filled with sunshine, laughter and happiness. Since Sunrise is a *day camp*, it does all this while allowing the children to continue their medical treatment and enjoy the comfort and safety of their own homes at night. Today, Sunrise Day Camps are located in New York (Long Island and Pearl River) and Israel and are affiliated with 22 renowned hospitals and medical centers. All of Sunrise's camp programs are offered free of charge and MMF is proud to be among the camp's newest supporters this year. www.sunrisedaycamp.org



HEALING ILLNESS WITH MUSIC:



MMF is proud to help **Musicians On Call** bring bedside performances and lessons to pediatric oncology patients at Sloan Kettering in New York, unlocking the

restorative & healing power of music.

www.musiciansoncall.org

FUNDING ARTISTS & EDUCATION:

Based on core values of Artistry, Character, Empowerment and Scholarship, **DreamYard** encourages young people of The Bronx, NY, to pursue educational pathways toward higher learning, meaningful careers and social action. MMF continues to support DreamYard's expansive services to underserved communities, with in-school arts and education programming reaching more than 40 Bronx public schools; DreamYard Preparatory High School preparing 370 students for college each year; and the DreamYard Art Center providing access to arts, leadership development opportunities, and academic and social supports. www.dreamyard.com



TRANSFORMING YOUNG LIVES AND COMMUNITIES THROUGH THE POWER OF MUSIC

In light of Michael's love for music and its power to change lives, **BackCountry Jazz** was a perfect match for MMF's mission. BCJ celebrates, preserves and expands the rich tradition of America's art form, Jazz.

BCJ was founded in 2007 by internationally renowned saxophonist Bennie Wallace to address

"These children get more music education in one month than they get in the entire school year. It is critical that we expand the program throughout the year."

— **Tania Kelley, Principal**
Bridgeport Roosevelt School

the declining support for music and arts programs across the country. BCJ's mission is to transform young lives and build community through the power of music. Multiple studies demonstrate that playing music leads to academic success and teaches young people valuable skills for college, career and life success: teamwork, self-discipline, joy of accomplishment, and so much more. To this end, an MMF grant of \$3,500 will support the BCJ Summer Music Camp and an After School Program for Bridgeport Public School children. www.backcountryjazz.org



BackCountry Jazz founder and tenor saxophonist Bennie Wallace (center), with some of the BCJ Summer Music Camp Students.

MMF PROUDLY CONTINUES INSPIRATIONAL RELATIONSHIP WITH FRIENDS OF KAREN

For a sixth consecutive year, MMF provided financial support to **Friends of Karen**, a non-profit charitable organization that provides vital, comprehensive services to families coping with the catastrophic impact of having a child diagnosed with cancer or another life-threatening illness. In 2014 alone, the organization assisted 635 ill children and 990 of their siblings. Not only does the organization provide direct financial assistance to the families for medical, transportation and household bills, but it also provides all children (patients and siblings) with school supplies, holiday gifts, social support networks and art therapy. The tremendous impact of Friends of Karen continues to inspire everyone at MMF and we are grateful that your donations enable us to continue providing much needed support. www.friendsofkaren.org

Michael Manzella Summer Fellowship Recipients, 2015 Matching Passion with Action

MMF awarded fellowships totaling more than \$11,000 to six undergraduates whose summer projects demonstrate our powerful mission in action



Nick Goel

Research in the lab of Dr. David Rimm at the Yale School of Medicine Department of Pathology. Nick's research

relates to DCIS, which some people call "Stage Zero Cancer," a diagnosis that is skyrocketing in our population. Nick's project focuses on the discovery of new "biomarkers" in breast cancer—protein or genetic markers that a pathologist could look for in a tissue biopsy to better understand an individual patient's tumor and offer more effective and more personalized therapy. As Nick reports, **"My initial results have been very exciting...I've probably accumulated enough data for a first publication."**



Jessica Su

Research related to Ovarian cancer in the laboratory of Dr. Samuel Katz at Yale.

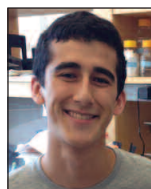
Jessica has been an MMF Fellow both this summer and last, as she has the motivation, dedication and drive to make a tremendous impact in the battle against cancer through her contributions in the lab. Devastated by the loss of her close friend who died of cancer in high school, Jessica determined at a young age that she would honor her friend's memory by devoting her efforts and her career to the fight against cancer. Still an undergraduate, Jessica has become an integral part of Dr. Katz' research team and she remarks, **"After working in the same lab for three consecutive summers and a semester to uncover the role of the pro-apoptotic BCL-2 protein BOK, I now understand why it takes years to see a project through in cellular biology research."**



Kevin Sherwin

Forming, rehearsing and conducting the New Haven Summer Chorus, a group of 25 volunteer singers from Yale and the

greater New Haven community. The summer-long rehearsal period culminated in a final, free community concert at Trinity on the Green, featuring the Durufle Requiem and other works where Kevin managed to bring together a small chamber orchestra to accompany the vocalists in performance. Kevin worked with mentor Mark Bailey, Artistic Director of the American Baroque Orchestra, to learn more about being "a more effective leader, conductor, and teacher for the chorus." Kevin's enthusiasm about this new musical venture was contagious, as he notes, **"At rehearsal, an alto singer was so excited about the chorus, she asked if she could have an extra recruitment poster just to frame it!"**



Daniel Michelson

Research in the laboratory of Dr. Schatz at Yale, investigating transacting factors in somatic hypermutation (SHM). Dan's

research seeks the connection between immunology and diseases such as cancers like B-cell lymphoma as well as HIV. Daniel valued the opportunity to spend his entire summer deeply engaged in the lab, saying "It's been a really interesting (and enjoyable) experience to come into lab each morning and be able to do a full day's work, rather than doing work piecemeal, as I do during the year." Daniel learned the realities of research, including how to adapt and persevere when faced with an unexpected setback in the process, noting, **"I am hoping that these experiences, though, will help make my future research more efficient since I now know better what sorts of day-to-day actions in lab speed or slow the research process."**



Kevin Huang

Research on the role of ATF4 in Lung Adenocarcinoma Metastasis the lab of Dr. Don X. Nguyen at Yale. Kevin

found the experience highly rewarding, noting, **"I have loved every minute of my time in the lab, and the members of my lab have become my second family...I would like to thank the Michael Manzella Foundation for providing me with this wonderful opportunity and allowing me to contribute in the fight against cancer."** When he wasn't in the lab this summer, Kevin spent his time rehearsing for his piano concert at Carnegie Hall this November!



Elsie Yau

Founding and managing an annual, community-based summer classical music concert series in the Harlem

and Washington Heights neighborhoods of New York City. Hailing from Queens and still studying piano with professional musicians, Elsie drew on a network of talented but financially struggling musicians living in Harlem to devise summer music concerts as a way to link Harlem's new artist community with the longtime neighborhood residents. This brought high-quality classical music to individuals with limited exposure and no money to spend on concerts. Elsie was "blown away by the amount of support [she] received for the series," which taps into local churches as both ideal venues for classical music performance and as conduits to new audiences. As Elsie recalls, **"At the last concert, a parishioner from the early morning service actually waited around in church for two hours just to see the concert."**



OUR MISSION

Board of Directors 2015

Frank J. Manzella
Chairman

Diana Loukedis Doherty
President

Mark A. Mongelluzzo
Vice President

Jeffrey Weinberger
CFO

Joan Manzella
Secretary

Peter J. Cazamias

Elaine Conner

Katherine Fong

Seth Kosto

Carol Ann Manzella

Casey Manzella

Frank Manzella, Sr.

Jennifer Missbrenner

Jeanine Volpe-Caramore



Michael Manzella
(1971 - 1993)

Michael Manzella, a gifted scholar, musician and athlete, succumbed to a two-year battle with cancer in 1993 at the age of 21. He left behind a legacy of music, love and inspirational courage. This Foundation was conceived to honor that legacy.

The Michael Manzella Foundation is a not-for-profit corporation dedicated to activities in education, children's causes, cancer research and the arts. We support those individuals and institutions that demonstrate the leadership and potential to make significant contributions in these areas. These goals are consistent with the struggles and achievements of Michael's life.

Where Are They Now? Rachel Wilf, Yale College '12, Yale Law '17



The 2011 recipient of the Michael Manzella Award, Rachel Wilf is now a 2L at Yale Law School with a focus on public interest law. After graduating from Yale in 2012, Rachel followed her passion for the public interest by working at the Center for American Progress, the Woodrow Wilson Center, and the Cambridge-based Tobin Project. From there, she accepted a position back in New Haven as a Policy Fellow at the non-profit All Our Kin, focusing on Early Childhood

education and childcare issues.

Rachel is the Chair of Yale Law Women, a group whose mission is to advance the status of women in law school as well as in the practice of law. A well-rounded individual, Rachel not only hones her litigation skills as a member of the Landlord-Tenant Clinic while assisting low income individuals, but also works her vocal skills as a member of Habes Chorus, Yale Law's *a cappella* group.

MMF is proud of Rachel's accomplishments and wishes her well in all her pursuits.

Keep in Touch! To hear more about MMF events, please provide us with your e-mail address on the enclosed form.

If you wish to support MMF, you may send a tax-deductible donation to:

Michael Manzella Foundation
412 Woodbridge Road
Rockville Centre, New York 11570

You may also donate on-line at www.themichaelmanzellafoundation.com.
This option is available under the "About" tab. Thank you for your support.