



## OUR MISSION



**Michael Manzella**  
(1971 - 1993)

**Michael Manzella**, a gifted scholar, musician and athlete, succumbed to a two-year battle with cancer in 1993 at the age of 21. He left behind a legacy of music, love and inspirational courage. This Foundation was conceived to honor that legacy.

The Michael Manzella Foundation is a not-for-profit corporation dedicated to activities in education, children's causes, cancer research and the arts. We support those individuals and institutions that demonstrate the leadership and potential to make significant contributions in these areas. These goals are consistent with the struggles and achievements of Michael's life.

### Board of Directors 2017

Frank J. Manzella  
**Chairman**

Diana Loukedis Doherty  
**President**

Mark A. Mongelluzzo  
**Vice President**

Jeffrey Weinberger  
**CFO**

Joan Manzella  
**Secretary**

Peter J. Cazamias

Elaine Conner

Jennifer DuBrul

Katherine Fong

Seth Kosto

John P. Loge

Carol Ann Manzella

Casey Manzella

Frank Manzella, Sr.

Sean Manzella

Jeanine Volpe-Caramore

## Where Are They Now? Ethan Karetsky Yale '14



that summer found Ethan doing research in Los Angeles

Back in 2013, Ethan Karetsky (Yale '14) spent the summer as a Manzella Fellow conducting research on American Musical Theater and worked with his growing production team to develop the musical "Gypsy" into a mainstage production for performance at Yale for the 2013-14 academic year. Part of

and he now lives there full-time having joined Hulu in Content Acquisition, supporting the licensing deals that bring the best of TV and film to the streaming service. Ethan has also continued to pursue his passion for theater, producing a new folk musical by fellow Yalies called DUST CAN'T KILL ME in the New York Musical Festival in August of 2016. We will continue to keep an eye out for Ethan . . . productions will be on Broadway at some point!

**Keep in Touch!** To hear more about MMF events, please provide us with your e-mail address on the enclosed form.

**If you wish to support MMF, you may send a tax-deductible donation to:**

Michael Manzella Foundation  
412 Woodbridge Road  
Rockville Centre, New York 11570

You may also donate on-line at [www.themichaelmanzellafoundation.com](http://www.themichaelmanzellafoundation.com). This option is available under the "About" tab. Thank you for your support.



MICHAEL MANZELLA FOUNDATION  
EDUCATION • CHILDREN • CANCER RESEARCH • ARTS

# SAVE THE DATE

## SUNDAY, NOVEMBER 19 GOVERNORS COMEDY CLUB NIGHT

Please join us at Governor's Comedy Club, Levittown. Come celebrate Michael's energy and spirit laughing with family and friends while supporting the MMF's mission. Don't forget our raffle of beautiful gift baskets and certificates from local businesses.



For more information and/or reservations, call Joan Manzella at (516) 764-7419.

## SATURDAY, NOVEMBER 18 YALE HARVARD POST-GAME RECEPTION

Immediately following Yale's victory, friends and supporters of MMF are invited to enjoy pizza and beverages at Timothy Dwight College at Yale. The Society of Orpheus and Bacchus will once again regale the crowd with music and merriment. Please join us!



### Inside This Issue

Fundraising Events .....	1
Foundation Grants .....	2
Summer Fellowships .....	3
Mission Statement.....	4
Where Are They Now? .....	4

## FROM THE CHAIRMAN

Dear Friends:

2017 marks our *24th year of activity* and we are again pleased to report that MMF continues to experience great success in pursuing our mission in *education, children's causes, cancer research and the arts*. We have supported well over 100 brilliant and passionate Fellows who continue to do great things in the world. And our 2017 Fellows are again an amazingly talented group. We hope you enjoy reading about each in the following pages.

This year, we are proud to have sponsored 4 new Fellows who are working with leading cancer experts in world-renowned laboratories. Each of these gifted Fellows is, in their unique way, contributing to the *multi-front battle against cancer*. They are fighting against specific cancers such as *lung, brain and neurological tumors* while also working on broad scientific approaches applicable across all cancer types including *protein signaling* and *receptor activation*.

We also continue to remain proud of our *long-term selective partnerships* offering much-needed financial support to organizations that share our mission. We have provided ongoing support to *artistic education* for inner-city children (DreamYard), aid to families of *children with life-threatening illnesses* (Friends of Karen) and *musical comfort to children with cancer* (Musicians on Call).

As we always do, we have also provided a snapshot of one of our past fellows, Ethan Karetsky (Yale '14). Ethan was a dedicated artist in his Yale undergraduate days and is continuing to do great things in the entertainment world. We'll see one of his productions on Broadway before we know it!

So, with another series of successes behind us, we remain *infinitely grateful* for your past support and *exceptionally confident* in our ability to continue making the world "just a little bit better" every day.

*Frank J. Manzella*

### Michael Manzella Award

At the May 2017 graduation, Timothy Dwight College once again presented the Michael Manzella silver bowl award to a graduating senior who exemplifies Michael's "sterling qualities" and whose "kindness, dedication and courage most inspired his classmates."



This year the award was presented by Timothy Manzella (Michael's nephew) to senior Julian Martin Hornik.

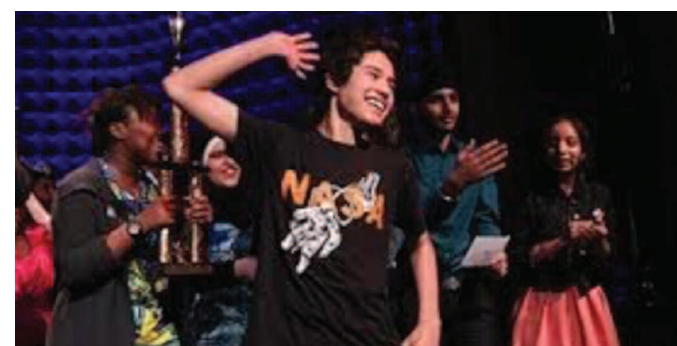
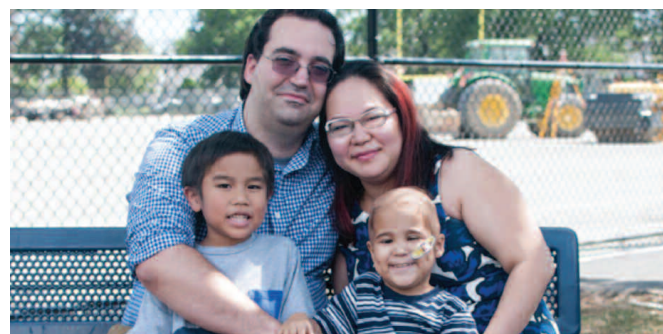
From left to right: Joan Manzella, Julian Martin Hornik, Timothy Manzella and Frank Manzella, Sr.

**LONG TERM MMF PARTNERS**

**MMF proudly awarded grants totaling \$15,000 to the following organizations:**

**Friends of Karen - Port Jefferson, NY**

For 8 years and over \$25,000 in grants to Friends of Karen, MMF has provided support to families with children who have life threatening illnesses. As one family explained after their 10 year old son had fallen ill, "we took extended leave from our jobs to be with our son 24/7 and without FOK, I don't know how we would have managed." [www.friendsofkaren.org](http://www.friendsofkaren.org)



**DreamYard Project - Bronx, NY**

MMF understands the importance of art in developing the overall person. With this understanding, MMF continues to support the DreamYard project and its invaluable art programs. Best said by a DY student, Jeremy, "DreamYard helped me to figure out what to do with my life and pushed me to grow because of the support I received." [www.dreamyard.com](http://www.dreamyard.com)



**Musicians on Call - Memorial Sloan Kettering Pediatric Center, NYC**

Restoring happiness to hospitalized children through music has been a passion for MMF. Once again, MMF has supported MOC to provide one-on-one interactions between musician and patient to bring joy to an otherwise joyless time. [www.musiciansoncall.org](http://www.musiciansoncall.org)



**BackCountry Jazz - Bridgeport, CT**

Supporting the creative spirit of children through art in at-risk neighborhoods, MMF provided a grant to BackCountry Jazz Summer Music Camp. According to Eric, a student, "BCJ has given me support, experience, inspiration, and encouragement to propel me forward on my journey as a developing musician." [www.dreamyard.com](http://www.dreamyard.com)



**MMF Summer Fellows 2017- A New Generation Commits to Fighting Cancer**

*In the twenty-four years since cancer claimed the life of Michael Manzella, research made tremendous strides, but as anyone suffering from the disease today can readily attest, there is still a long way to go. The four Yale undergraduates we proudly named MMF Fellows for the summer of 2017 valiantly joined the fight to better understand the mechanisms that allow cancer to form, challenge assumptions through diligent experimentation, and innovate treatments that could help prevent and defeat cancer. In their own words:*



**Josie Wilson**

Josie spent her summer in MIT's Jacks Lab, a leader in genetic events contributing to the development of cancer. Describing her summer researching **Non Small-Cell Lung Cancer**, Josie reports, "My days start around 8 AM, when I bike 10 miles to go to the lab, and ends when I start back home around 6 PM, or whenever I'm finished. I've been able to come up with meaningful experiments to continue to characterize the role of IL33 in tumor development, and I'm proud that my mentor takes my analysis and ideas seriously. Beyond my project, I've learned the most about cancer research as a whole through lab meetings, where every week a researcher presents his/her research for the lab. In cancer research, the dismal is often juxtaposed with the hopeful. I'm humbled to work in a field with such profound suffering, and am privileged to be given the opportunity to make a difference."

of these two proteins **causes downstream signaling in the cell that lead to cancer.** I have been working particularly frequently with a breast adenocarcinoma cell line called MDA-MB-231."

Referring to his mentor in the lab, Stephen notes that "I've realized that scientific research is really more of an apprenticeship than an internship. You learn closely from one person and pick up their idiosyncrasies of doing science. I'm producing useful data and seeing the fruits of my labor. I'm very excited to see that my work is contributing to the way we understand PROTACS as a potent prospective anti-cancer therapeutic option." Coincidentally, Stephen also became friends with another MMF fellow, Dan McQuaid (below), who was also conducting research in the Crews Lab.



**Dan McQuaid**

Also working in Dr. Crews' Lab, Dan explains, "The project I've been focusing on is related to using small molecules to **turn off receptors implicated in the development of cancer.** I've been very fortunate to have a prominent role in conducting experiments and investigating how these small molecules might be advantageous to many currently used cancer therapies."

Dan is one of the authors of a paper being **submitted for publication in the journal Cell Chemical Biology**, which is an exciting prospect, but striving to be published is not Dan's principal goal. He notes, "My research project

*in the lab is very close to my heart, due to many experiences my family members have had with cancer. Working in the lab has been a tremendously rewarding experience for this reason, as I'm able to work on something with translational impact to help cancer patients."*



**Hannah Lee**

At the Center for Childhood Cancer and Blood Diseases, Hannah conducted research on **brain and neurological tumors (meningioma and schwannoma)**. Reflecting on her summer work, Hannah considers how far she has come. "Every week we administer the drugs to the mice and image their tumors. We first inject the mice with luciferin, a compound that gives fireflies their light. The luciferin attaches to the tumors, then the tumor luminesces when scanned, which I quantify the next day using a software at the lab. The drug combinations seem to be working steadily, and the **tumors are decreasing for the treated mice.**"

Beyond this rewarding scientific work, Hannah also benefited from interaction in the lab with other college-aged colleagues from different academic disciplines. This included Mindy, a rising junior at Ohio State. "I love that Mindy is a Public Health major and that she is also passionate about it," Hannah writes, "because I think understanding and prioritizing real lives that science affects is so important in research."



**Stephen Wang**

Stephen writes of his time in the Yale lab of Dr. Craig Crews, a world-renowned expert in cancer chemistry, "I spent my summer conducting tests on a specific protein in the p38 family, specifically two isoforms, p38alpha and p38delta. Aberrant regulation or activation